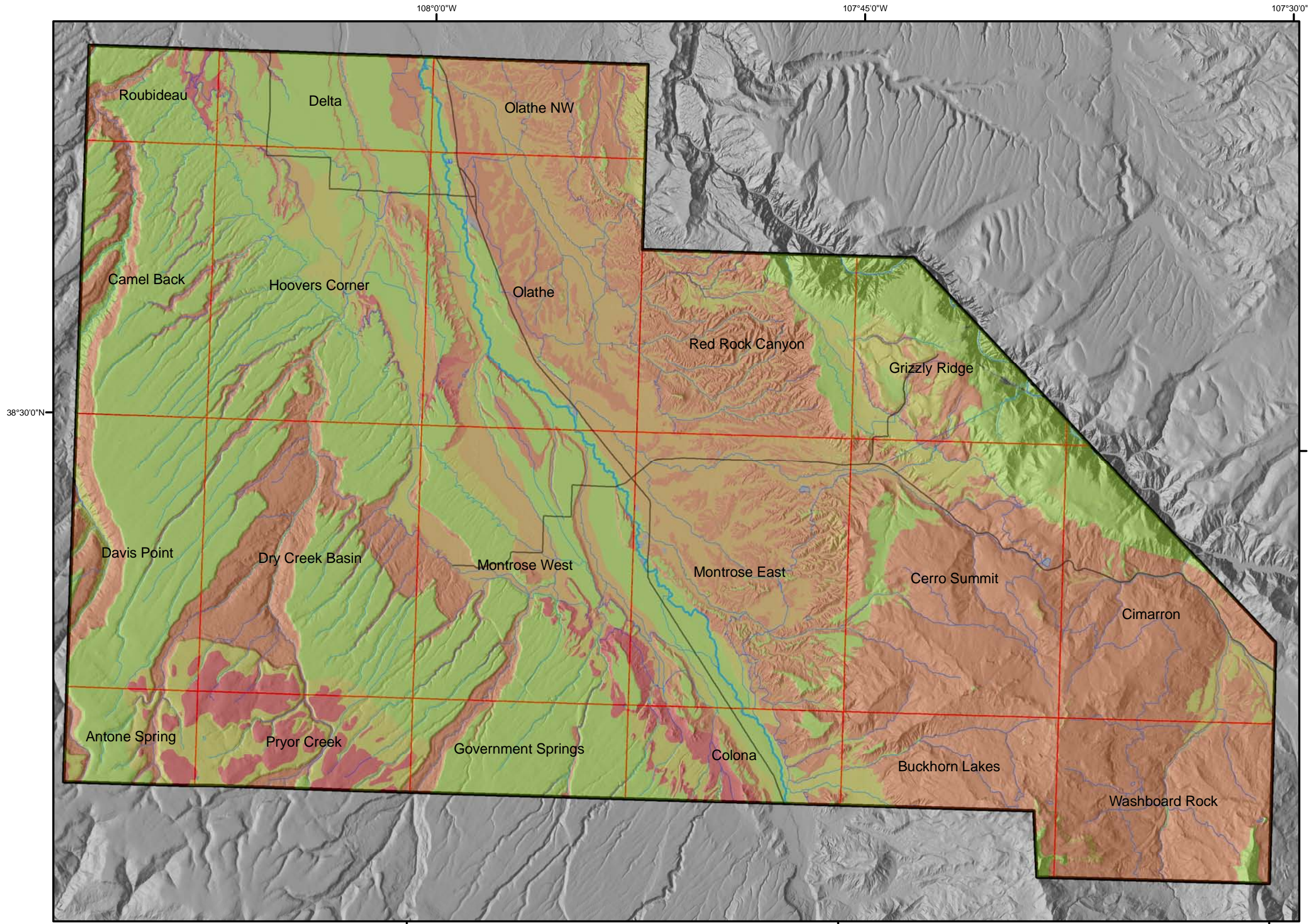


# Montrose County Geological Hazard Mapping Project

## Swelling Soil Potential Hazard Map



**Legend**

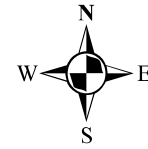
**Swelling Soil Potential Rating**

- High
- Moderate to High
- Moderate
- Low to Moderate
- Low

- Major highways
- Rivers and major irrigation canals
- Project Boundary
- Topographic Quad Boundaries, 1:24,000-scale

This mapping was funded jointly by FEMA Pre-Disaster Mitigation funds, Montrose County, and the Colorado Geological Survey (CGS) using the Colorado Department of Natural Resources Severance Tax Operational Funds.

The FEMA Award No. 6EM75C44 to Montrose County is managed by the Colorado Division of Emergency Management as part of the Colorado State Multihazard Mitigation Plan. The CGS matching funds come from the severance tax paid on the production of natural gas, oil, coal, and metals.



Scale  
1:205,000  
1 inch = 3.24 miles

0 0.5 1 2 3 4 Miles

Map coverage by J. White and D. Noe, CGS  
Hillshade created from USGS 10-m DEM



Bill Ritter Jr., Governor  
State of Colorado

Harris D. Sherman, Executive Director  
Department of Natural Resources

Vincent Matthews  
State Geologist and Division Director  
Colorado Geological Survey