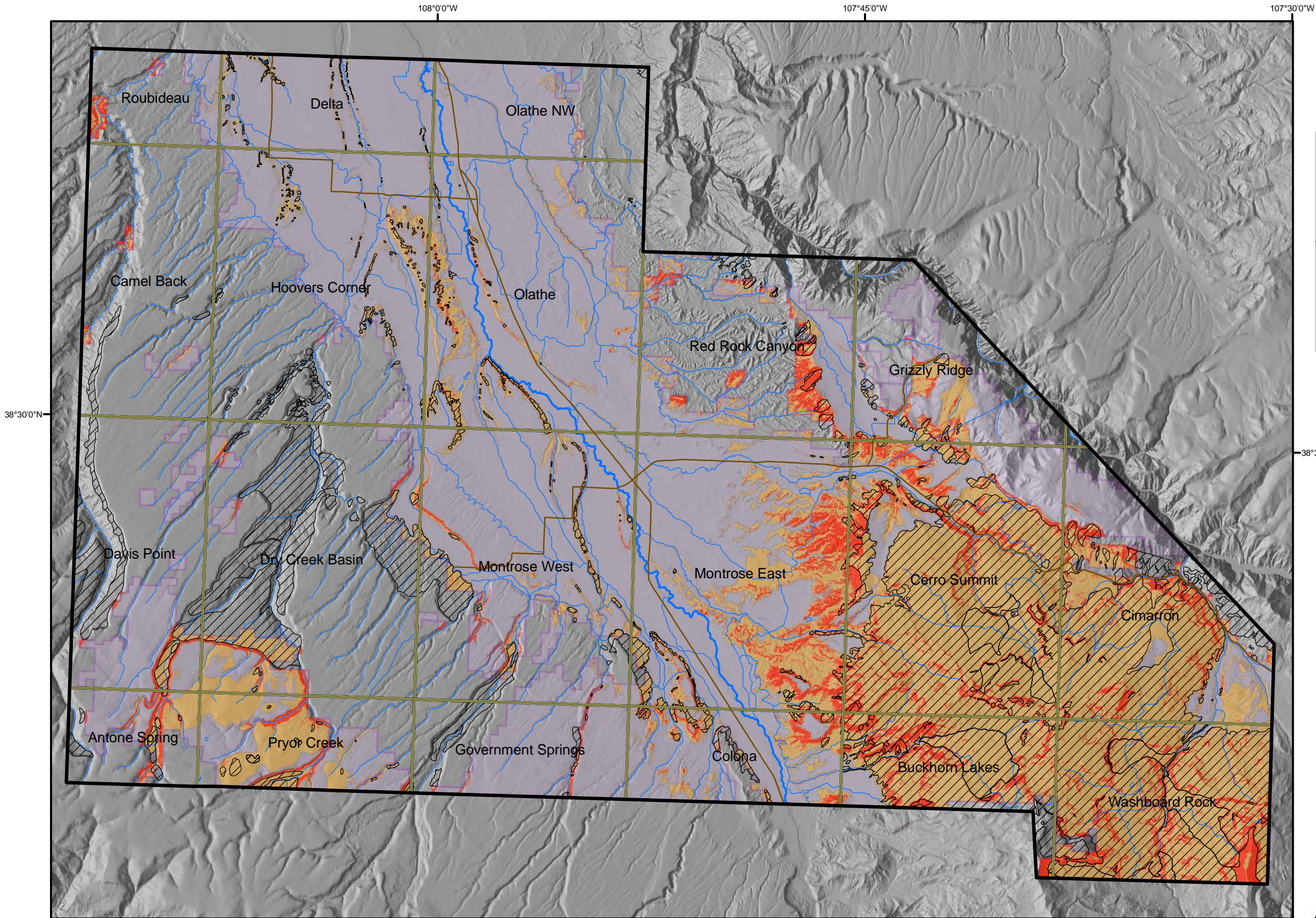


Montrose County Geological Hazard Mapping Project

Landslide Hazard Susceptibility on Private Lands

Plate 1
Landslide and Potentially
Unstable Slopes Hazard Map

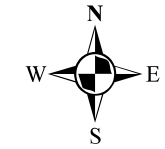


Legend

- Mapped landslides
- Landslide susceptibility zone
- Landslide susceptibility with slope > 3(h):1(v)
- Private lands within project boundary
- Major highways
- Rivers and major irrigation canals
- Project Boundary
- Topographic Quad Boundaries, 1:24,000-scale

This mapping was funded jointly by FEMA Pre-Disaster Mitigation funds, Montrose County, and the Colorado Geological Survey (CGS) using the Colorado Department of Natural Resources Severance Tax Operational Funds.

The FEMA Award No. 6EM75C44 to Montrose County is managed by the Colorado Division of Emergency Management as part of the Colorado State Multihazard Mitigation Plan. The CGS matching funds come from the severance tax paid on the production of natural gas, oil, coal, and metals.



Scale
1:205,000
1 inch = 3.24 miles

Landslide susceptibility coverage by TC Wait and J. White, CGS
Landslide inventory by J. White, CGS
Private land coverage from Montrose County
Hillshade created from USGS 10-m DEM



Bill Ritter Jr., Governor
State of Colorado

Harris D. Sherman, Executive Director
Department of Natural Resources

Vincent Matthews
State Geologist and Division Director
Colorado Geological Survey